

HH CATAMARANS
PERFORMANCE | LUXURY | CARBON CONSTRUCTION

| E-mail: sales@hhcatamarans.com |

Web: www.hhcatamarans.com |



HH CATAMARANS
PERFORMANCE | LUXURY | CARBON CONSTRUCTION

P05

Introduction and principal dimensions
General arrangements
Photo gallery

HH44

P13

Introduction and principal dimensions
General arrangements
Photo gallery

HH50

P25

Introduction and principal dimensions
General arrangements
Photo gallery

HH55

P39

Introduction and principal dimensions
Preliminary Concept
Photo gallery

HH60

P45

Introduction and principal dimensions
General arrangements
Photo gallery

HH66

Note:
Hudson Yacht Group reserves the right to change, through updates and improvements,
the product specifications in this brochure, without notification. All photographs in this
brochure are shown as examples of our build and finish quality. Photographs and renders
might feature options that are not included in the base boat's standard features.





HH CATAMARANS

PERFORMANCE | LUXURY | CARBON CONSTRUCTION

HH Catamarans builds state-of-the-art, carbon fiber, high performance yachts for a discerning clientele who seek an exceptional ownership experience.

The "HH" in HH Catamarans stands for Hudson and Hakes. Hudson Wang, from Taiwan, and Paul Hakes, from New Zealand, came together in early 2012 and set about developing a new brand, something extraordinary.

The name HH has since come to represent their personal commitment to the quality and success of every boat they build. Hudson and Paul set their sights on creating the greatest luxury performance catamaran possible. And so, the HH Catamarans was born.

HH44

THE FUTURE IS NOW

The HH44 is a disruptive new market entrant designed for those seeking the perfect balance of style, performance, safety and innovation. The carbon composite construction, parallel hybrid HH44 is a game changing, eco-friendly cruising yacht, poised to win the hearts and minds of early tech adopters, world cruisers and serious sailors.





Principal Dimensions

LOA	15.15 m	49.70 ft
LWL	13.28 m	43.57 ft
BOA	7.15 m	23.46 ft
Hull Beam On Waterline	1.48 m	4.86 ft
Draft (Board Up)	1.10 m	3.61 ft
Draft (Board Down)	3.00 m	9.84 ft
Displacement Lightship	9390 kg	20701 lb
Displacement Max Load	13500 kg	29762 lb

Sail Areas

Mast Clearance	19 m	62.33 ft
Main Sail	74.20 m ²	799 ft ²
Solent	51.10 m ²	550 ft ²
Staysail	26.70 m ²	287 ft ²
Fractional Reacher	109.70 m ²	1181 ft ²
Furling Gennaker	148.90 m ²	1603 ft ²

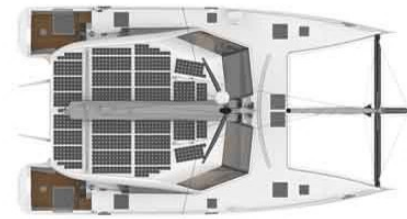
Engines

2 x BETA 30 + 2 x 10kW Parallel Hybrid Drives

Batteries	Lithium Ion 43.2 kWh LiFePO4
Speed Under Engine	8.5 Knots
Cruising Range At 7 Knots	628 Nm
Classification	CE Category A, Module B
Designers & Structural Engineers	HH Catamarans



PERFORMANCE
LUXURY COMFORT
INFINITE RANGE



The HH44 incorporates all the features that set HH Catamarans apart: exceptional sailing performance, robust epoxy construction with extensive use of carbon fiber, exquisite interior fit and finish and state-of-the-art marine equipment.

The HH44 has been conceived from the ground up to work with a Parallel Hybrid. This 'Eco Drive' provides all the benefits of an electric boat: silent, no vibration, fume free motoring, instant torque for maneuverability, and hydro regeneration while sailing, but maintains the reliability of trusty diesel engines in one neat package. The boat comes with 3.2kW+ of solar to power daily living needs and with the 43.2kWh Lithium battery bank, offers 2.5 hours of silent motoring at up to 7.5 knots. All this, combined with excellent sailing performance, gives the HH44 essentially infinite range.



Not only do the closed transoms increase the safety of the HH44, when lowered the platforms provide four feet of additional living space and an easy connection with the water.



Preliminary Concept

Both forward windows open completely for ventilation, aft salon windows hinge open, and with the sliding door open, experience a continuous indoor-outdoor flow from the salon into the aft cockpit.

Dual aft helms pivot in/out for protection/visibility/sailing experience. Flip down helm seats are out of the way for everyday living, and are simply deployed when needed. All sail controls are led under deck: trimming, hoisting, reefing, furling and controlling the daggerboards are all done from the safety and comfort of the aft cockpit helm stations.

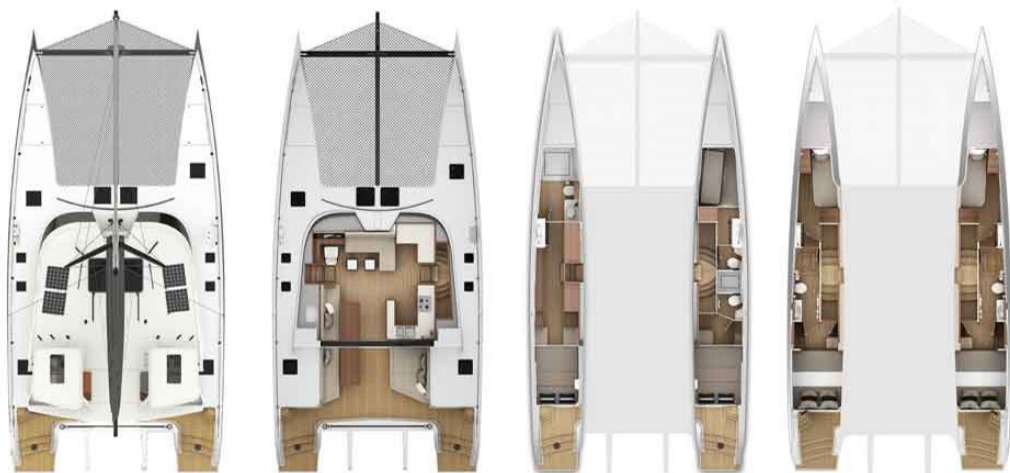
HH50

SPEED
STYLE
SIMPLICITY

A bluewater capable, performance cruiser with intelligent yet simple-to-use systems, carbon construction, spacious interiors and luxurious finish. Offering the best of all worlds in a compact, easy-to-manage package; robustly built and fully equipped to take you around the world in comfort and style.



HH5004 Lickety



DECK PLAN

SALON

3 CABINS

4 CABINS
OPTIONAL

15 The following is a selection of suggested interior arrangements. Additional variations are available. Hudson Yacht Group reserves the right to modify general arrangements without notification.

Principal Dimensions

LOA	15.79 m	51.80 ft
LWL	14.89 m	48.85 ft
BOA	7.44 m	24.41 ft
Hull Beam On Waterline	1.73 m	5.68 ft
Draft (Board Up)	1.65 m	5.43 ft
Draft (Board Down)	3.30 m	10.83 ft
Displacement Lightship	11500 kg	25300 lb
Displacement Max Load	16000 kg	35200 lb

Sail Areas

Mast Clearance	22.97 m	75.36 ft
Main Sail	81.13 m ²	873.28 ft ²
Self-Tacking Jib	37.80 m ²	406.90 ft ²
Overlapping Jib (optional)	58.70 m ²	631.84 ft ²
Fractional Reacher	101.80 m ²	1095.77 ft ²
Spinnaker (optional)	135.50 m ²	1458.51 ft ²
Storm Jib (optional)	9 m ²	96.88 ft ²

Engines

	2 x Yanmar 40HP
Batteries	Lithium Ion 11 kWh LiFePO4
Speed Under Engine	9 Knots
Cruising Range At 7 Knots	540 Nm
Classification	CE Category A, Module B
Designers & Structural Engineers	Morrelli & Melvin

LIGHTER
STRONGER
SMARTER
FASTER

Carbon fiber construction equals a strong, very light, extremely rigid platform—integral for safe and efficient sailing.

Designed with short-handed sailing in mind, the deck layout on the HH50 has been carefully configured, with all sail controls at the helms to maximize ease-of-use.



HH5003 Off-Piste



HH5004 Lickety

PERFORMANCE
CRUISING

Though simple to sail, the HH50 is far from subdued. "Raceboat in disguise" technology abounds, and equal-to-wind-speed performance is the norm.

After days or weeks of exhilarating offshore passage making, fully retractable curved daggerboards allow you to secure the best spot in the anchorage and explore the dreamy shallows.

HH50



19



HH5001 Tribute



HH5002 Avalanche



20

Aft Cockpit & Salon
HH5004 Lickety



THE PERFECT PLATFORM FOR ENTERTAINING

The HH50 features a spacious and well-thought-out general arrangement. To port there's seating for six around a large dining table and a dedicated navigation station. To starboard the galley, with four burner stove, deep double sink and ample dry and cold storage. A cozy settee amidship provides the perfect conversation area and rounds out the salon.

An outdoor settee and table connect seamlessly with the salon table, setting the stage for open air dinner parties. A large sun lounger to starboard provides ample space for the sun worshipers onboard.

Master Cabin
HH5004 Lickety



Master Cabin En-Suite



Day Head



Below deck you will find a luxury queen cabin in each hull. The highlight in the aft cabins is the big aft windows and the lavish headboards. The master cabin, to port, boasts substantial storage space, a spacious head, and separate shower. The guest suites are to starboard with generous heads and a shared shower.

Master Cabin
HH5002 Avalanche





HH5502 Haifeng

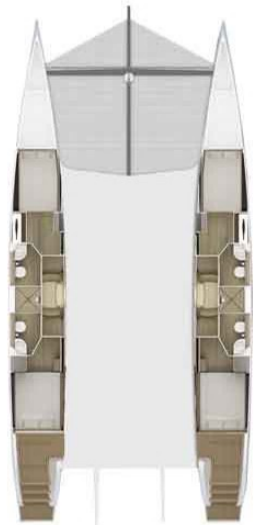
HH55

BRAINS BRAWN BEAUTY

An exquisite balance of luxury, performance and manageability. The award-winning HH55 is an all-carbon blue water capable, fast sailing catamaran that's prepared to sail anywhere in the world.

AFT HELM OPTION

FWD HELM OPTION



DECK PLAN

SALON

3 CABINS
STANDARD

DECK PLAN

SALON

4 CABINS
OPTIONAL



HH5503 Ticket to Ride



Principal Dimensions

LOA	16.74 m	54.92 ft
LWL	16.21 m	53.18 ft
BOA	8.10 m	26.57 ft
Hull Beam On Waterline	1.50 m	4.92 ft
Draft (Board Up)	1.30 m	4.27 ft
Draft (Board Down)	3.30 m	10.83 ft
Displacement Lightship	14700 kg	32187 lb
Displacement Max Load	19663 kg	43349 lb

Sail Areas

Mast Clearance	26.90 m	88.23 ft
Main Sail	117.00 m ²	1259 ft ²
Solent	67 m ²	721 ft ²
Staysail	41 m ²	441 ft ²
Fractional Reacher	188.80 m ²	2032 ft ²

Engines

	2 x Yanmar 57 HP	
Batteries	Lithium Ion 16.5 kWh LiFePO4	
Speed Under Engine	10 Knots	
Cruising Range At 7 Knots	700 Nm	
Classification	CE Category A, Module B	
Designers & Structural Engineers	Morrelli & Melvin	



HH5504 Utopia



HH5501 Minnehaha

SAFETY & SHORT HAND SAILING

The HH55 is a robust platform that can be managed by just two people for short handed sailing. In keeping with our commitment to luxury and excellent performance, this yacht emphasizes the safety, strength and weight saving properties that only carbon can offer.

The HH55 features curved "C" daggerboards for greater performance and a smoother ride. All sail handling is done from either the forward cockpit on the forward helm arrangement, or led aft to the twin helm stations on the aft helm boat.



HH5503 Ticket to Ride



HH5504 Utopia



Fwd Helm Station
HH5501 Minnehaha

Salon & Aft Cockpit

COZY &
CUSTOMIZABLE

The spacious salon (23.55m²) flows seamlessly into the large aft cockpit (19.94m²) with dining table, sun bed, wet bar and barbeque. The large sliding doors open completely to one side, merging the two spaces into one expansive and inviting area in which to live and entertain.

Master Cabin
HH5501 Minnehaha



Guest Cabin



Customization and personalization options abound with three or four cabin layouts and a multitude of interior styling options.

HH60

SPACE PACE & GRACE

For those seeking limitless adventure and unbridled speed, the new HH60, with its powerful rig plan, extra-large cockpit, king size beds, and deep daggerboards, is sure to ignite the imagination. The fully refined, performance optimized HH60 will provide the ultimate platform for whatever lies over the horizon.





Principal Dimensions

LOA	17.95 m	58.88 ft
LWL	16.92 m	55.50 ft
BOA	8.12 m	26.63 ft
Hull Beam On Waterline	1.70 m	5.58 ft
Draft (Board Up)	1.30 m	4.27 ft
Draft (Board Down)	4.00 m	13.12 ft
Displacement Lightship	15500 kg	34162 lb
Displacement Max Load	20600 kg	45402 lb

Sail Areas

Mast Clearance	28.78 m	94.40 ft
Main Sail	140.15 m ²	1508 ft ²
Solent	69.53 m ²	748 ft ²
Staysail	43.00 m ²	463 ft ²
Fractional Reacher	170 m ²	1829 ft ²

Engines

	2 x Yanmar 57HP	
Batteries	Lithium Ion 11 kWh LiFePO4	
Speed Under Engine	10 Knots	
Cruising Range At 7 Knots	700 Nm	
Classification	CE Category A, Module B	
Designers & Structural Engineers	Morrelli & Melvin	



Luxury and speed are elevated when you have the ability to expand. Whether it's the extended miles achieved sailing faster than the wind each day, or the heightened sense of opulence provided by luxury mattresses and cockpit rainfall shower heads, you can relax knowing you have the finest 60' catamaran available. Better by design. Better by build.

HH66

FASTER
STRONGER
SMARTER

Faster, stronger and more lavishly appointed than anything that preceded it, the award-winning, all-carbon HH66 set a new standard for luxury performance cruising catamarans. Ever-evolving and each hull unique, the HH66 can be tailored to fit your individual plans and desires.



AFT HELM OPTION

FWD HELM OPTION



DECK PLAN



SALON



3 CABINS
STANDARD



DECK PLAN



SALON



4 CABINS
OPTIONAL



HH6604 Nemo



Principal Dimensions

LOA	20.10 m	65.94 ft
LWL	19.80 m	64.94 ft
BOA	8.70 m	28.54 ft
Hull Beam On Waterline	1.70 m	5.58 ft
Draft (Board Up)	1.96 m	6.43 ft
Draft (Board Down)	4.00 m	13.12 ft
Displacement Lightship	18000 kg	39682 lb
Displacement Max Load	24750 kg	54564 lb

Sail Areas

Mast Clearance	30 m	98.36 ft
Main Sail	144 m ²	1550 ft ²
Solent	89 m ²	958 ft ²
Staysail	59 m ²	635 ft ²
Fractional Reacher	195 m ²	2099 ft ²
Spinnaker (optional)	290 m ²	3121 ft ²
Storm Jib (optional)	23 m ²	248 ft ²

Engines

	2 x EPA Tier3 Yanmar 80 HP	
Batteries	Lithium Ion 16.5 kWh LiFePO4	
Speed Under Engine	10 Knots	
Cruising Range At 7 Knots	790 Nm	
Classification	CE Category A, Module B	
Designers & Structural Engineers	Morrelli & Melvin	



51

HH6601 R-Six



THE PERFECT BALANCE OF PERFORMANCE COMFORT & AESTHETICS

After carefully considering what the ultimate sailing machine should be, HH Catamarans set about designing a fast, sleek, luxurious and spacious catamaran that struck the ideal balance between performance, comfort and aesthetics.

HH Catamarans are customizable to the extent that no two hulls are alike. From layout to equipment and finishes, each unique yacht is perfectly suited to its owner's individual requirements.



HH6605 Flash

52



Fwd Helm Station



HH6601 R-Six Salon



HH6605 Flash Aft Cockpit





 www.hhcatamarans.com

 www.instagram.com/hh_catamarans

 www.facebook.com/hhcatamarans

 Seth Hynes +1 386-414-6700
Chris Ballet +1 401-924-4566



HH OCEAN
SERIES

HH CATAMARANS

| E-mail: sales@hhcatamarans.com | Web: www.hhcatamarans.com | Phone: +1 386-414-6700 |





Note: Hudson Yacht Group reserves the right to change, through updates and improvements, the product specifications in this brochure, without notification. All photographs in this brochure are shown as examples of our build and finish quality. Photographs and renders might feature options that are not included in the base boat's standard features.

OC44

Page 3

**HH44
OPEN**

Page 7

OC50

Page 13



OC44

Sailing in its purest form. Stylish and fast with luxurious comfort. Take control at one of the OC44's twin aft helms to experience the excitement and joy of sailing a true performance cruising catamaran. The fundamental difference between the OC44 and the HH44 are the very special cruising keels, with winglets that provide incredible traction sailing upwind, and allow the boat to point six degrees higher than conventional keels.

Principal Dimensions

LOA	15.15 m	49.70 ft
LWL	13.28 m	43.57 ft
BOA	7.15 m	23.46 ft
Hull Beam On Waterline	1.48 m	4.86 ft
Keel Draft	1.52 m	4.99 ft
Displacement Lightship	8750 kg	19290 lb
Displacement Max Load	13500 kg	29762 lb

Sail Areas

Mast Length	19 m	62.33 ft
Main Sail	74.20 m ²	799 ft ²
Overlapping Solent	51.10 m ²	550 ft ²
Self-Tacking Staysail	26.70 m ²	287 ft ²
Fractional Reacher	109.70 m ²	1181 ft ²

Engines

	2 x BETA 30
Batteries	AGM
Speed Under Engine	8.5 Knots
Cruising Range At 7 Knots	628 Nm
Classification	CE Category A, Module B

OC44 HIGHLIGHTS

Folding transom platforms provide safety while underway, and deploy at anchor or on the dock to create four feet of additional living space and an easy connection to the water.

All lines are lead under-deck to the aft helm station, giving you fingertip control of the boat from the comfort and safety of the aft cockpit.

The carbon fiber steering wheel swing inboard for protection from the weather or outboard when you want the wind in your hair.

Huge potential for upgrades to the latest technological innovations, over 3.2kW of solar, electric propulsion, hydro regeneration, carbon fiber mast, performance sails, varnished real wood interiors. The OC44 is ready to make your own.



HH44 OPEN

The HH44 OPEN has been designed by HH Catamarans in collaboration with the Disabled Sailors Association (DSA) of the UK specifically for their clients. The DSA clients seek independence, dignity, and the ability to compete with able-bodied sailors. The HH44's innovation and careful design enable the disabled sailor to easily get on and off the boat, down into the hulls with full chair turning room, and up onto the side decks and foredeck.



The HH44 layout is designed to maximize the enjoyment of sailing, regardless of the weather. Large open spaces for easy wheel chair access. Interior helm station with all sail controls in a centralized location. Forward, top, side and aft windows open to allow the sun and breeze into the cockpit when desired. The standard configuration is ideal for coastal cruising/day sailing, however the boat can be easily made ready for offshore sailing. All equipment and structures are engineered to ISO category A for offshore sailing.

Principal Dimensions

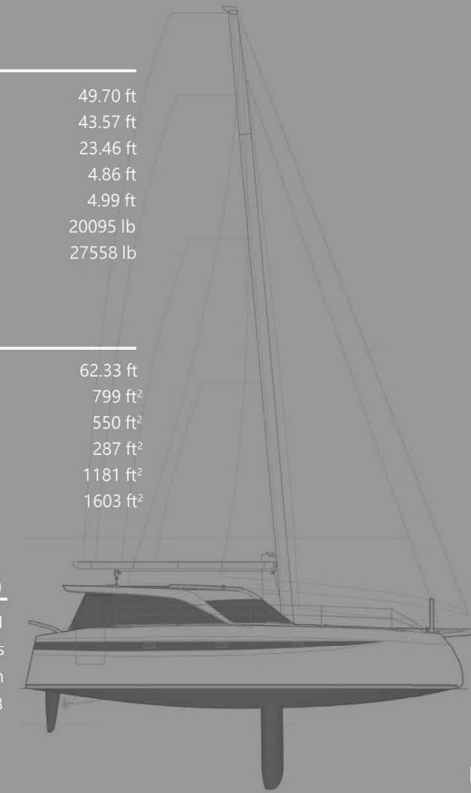
LOA	15.15 m	49.70 ft
LWL	13.28 m	43.57 ft
BOA	7.15 m	23.46 ft
Hull Beam On Waterline	1.48 m	4.86 ft
Draft	1.52 m	4.99 ft
Displacement Lightship	9115 kg	20095 lb
Displacement Max Load	12500 kg	27558 lb

Sail Areas

Mast Length	19.00 m	62.33 ft
Main Sail	74.20 m ²	799 ft ²
Solent	51.10 m ²	550 ft ²
Staysail	26.70 m ²	287 ft ²
Fractional Reacher	109.70 m ²	1181 ft ²
Furling Gennaker	148.90 m ²	1603 ft ²

Engines

	2 x BETA 30
Batteries	AGM
Speed Under Engine	8.5 Knots
Cruising Range At 7 Knots	628 Nm
Classification	CE Category A, Module B





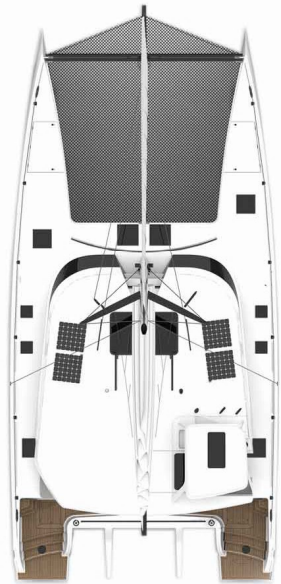
DESIGNED FOR SAFETY AND EASE OF USE

Numerous design features allow maximum freedom and mobility aboard: Ro-ro side boarding platforms, enclosed transoms, electric lifts for side deck and hull access, wide passageways, flush door thresholds.



OC50

Far from ordinary, the Ocean Series was created to emphasize the pure joy of sailing on a yacht capable of cruising around the world in style. Exceptional design, intuitive systems, envy inducing aesthetics, spacious and comfortable living spaces, and safe, responsive sailing characteristics set the OC50 apart.



DECK PLAN



SALON



3 CABINS

Principal Dimensions

LOA	15.79 m	51.80 ft
LWL	14.89 m	48.85 ft
BOA	7.44 m	24.41 ft
Hull Beam On Waterline	1.73 m	5.68 ft
Keel Draft	1.56 m	5.12 ft
Displacement CE Lightships	13150 kg	28991 lb
Displacement CE Max Load	17000 kg	37479 lb

Sail Areas

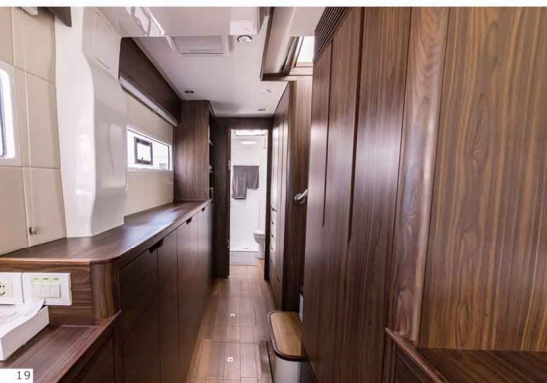
Mast Clearance	21.88 m	71.78 ft
Main Sail	81.13 m ²	873.28 ft ²
Self-Tacking Jib	44.50 m ²	478.99 ft ²
Fractional Reacher	101.80 m ²	1095.77 ft ²

Engines

Batteries	2 x Yanmar 3JH40	AGM
Speed Under Engine		8.5 Knots
Cruising Range At 7 Knots		510 Nm
Classification		CE Category A, Module B







WHAT
SETS THE
OCEAN SERIES
APART

Hull design remains the same, as do generous interior spaces, ultra-durable finish, and a level of luxury found only aboard an HH Catamaran. The carbon skeleton is complimented by e-glass and epoxy construction, a single helm and mini-keels with winglets round out the distinct features of the OC50.



HH CATAMARANS

PERFORMANCE | LUXURY | CARBON CONSTRUCTION

HH88



-  www.hhcatamarans.com
-  sales@hhcatamarans.com
-  www.instagram.com/hh.catamarans
-  www.facebook.com/hhcatamarans
-  Seth Hynes +1 386-414-6700
- Chris Ballet +1 401-924-4566

HH CATAMARANS

PERFORMANCE | LUXURY | CARBON CONSTRUCTION

HH77





HH TT

**DYNAMIC POWER +
ULTIMATE LUXURY**

Options abound in the new range of superyacht-level performance catamarans. Layouts and styling are completely customizable, allowing owners to choose the specification that perfectly suits their plans and preferences.





Aft Cockpit



HH77 Sedan Cabintop With Twin Aft Helm Stations And Forward Cockpit



HH 77



Principal Dimensions

LOA	23.90 m	78.4 ft
LWL	23.85 m	78.2 ft
BOA	10.50 m	34.4 ft
Hull Beam On Waterline	2.80 m	9.2 ft
Mini Keels	2.3 m	7.5 ft
Displacement Lightship	36000 kg	79367 lb
Displacement Max Load	45000 kg	99208 lb

Sail Areas

Main Sail	186 m ²	2002 ft ²
Solent	119 m ²	1280 ft ²
Self-Tacking Jib	74 m ²	796 ft ²
Fractional Reacher	290 m ²	3121 ft ²

Engines

	2 x Yanmar 4ALV150 (150HP)	
Batteries	40 kWh LiFePO4	
Cruising Range At 6 Knots	1000 Nm	

Design

Naval Architecture	Morrelli & Melvin
Structural Engineering	Morrelli & Melvin
Styling	Hudson Yacht Marine
Classification	CE Category A, Module B

HH 88



Principal Dimensions

LOA	26.82 m	88 ft
LWL	26.20 m	86 ft
BOA	11.10 m	36.4 ft
Hull Beam On Waterline	2.78 m	9.1 ft
Hull Draft	2.45 m	8 ft
Displacement Lightship	45000kg	99000 lb
Displacement Max Load	60000 kg	132000 lb

Sail Areas

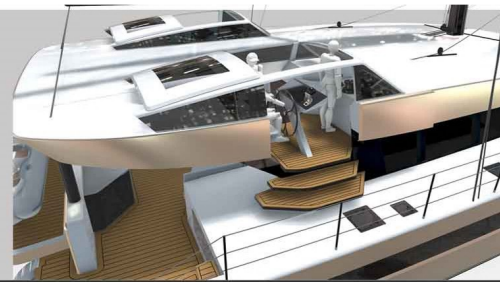
Mast Clearance	40 m	130 ft
Main Sail	246 m ²	2652 ft ²
Solent	150 m ²	1619 ft ²
Self-Tacking Jib	78 m ²	847 ft ²
Fractional Reacher	291 m ²	3131 ft ²

Engines

	2 x Yanmar Diesel Engine 4ALV170 (170 HP)	
Batteries	44 kWh LiFePO4	
Speed Under Engine	10 Knots	
Cruising Range At 6 Knots	1100 Nm	

Design

Naval Architecture	Morrelli & Melvin
Structural Engineering	Morrelli & Melvin
Styling	Hudson Yacht Marine
Classification	RINA and MGN 280



HH88

NEXT LEVEL LUXURY +
ELEVATED LIFESTYLE

Bespoke interiors, accommodations for up to twelve guests, a flybridge complete with jacuzzi. The options are limited only by the imagination.





Aft Cockpit



Open Flybridge Version



Enclosed Flybridge Version

